



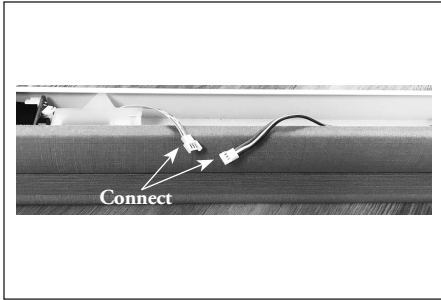
# Simplicity

## Rechargeable Motorization

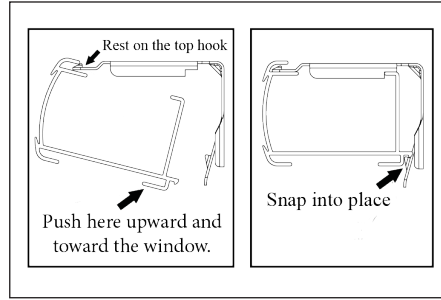
### CELLULAR SHADES |

### Quick Start Guide

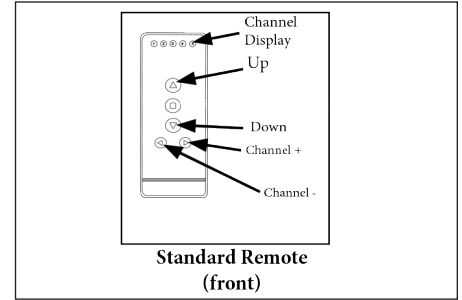
Your shade has come pre-programmed from the factory. Follow these easy steps to get started.



1. Connect the motor and battery in the headrail (as shown).



2. Mount the shade.

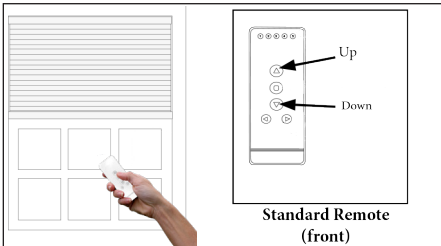


**Standard Remote (front)**

3. Your shade is now ready!  
Select the programmed channel and use the UP and DOWN arrows to operate the shade.

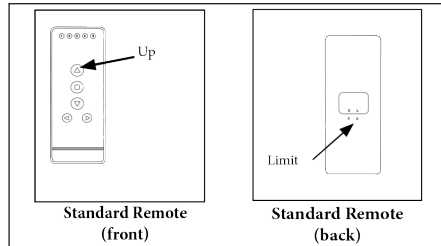
## Setting/Using a Favorite Position

Make sure there is only one shade programmed to the channel when setting a Favorite position.  
If more than one shade is set, please see UNLINK A SHADE in the Simplicity guide at [vistaproducts.com/guides](http://vistaproducts.com/guides).



**Standard Remote (front)**

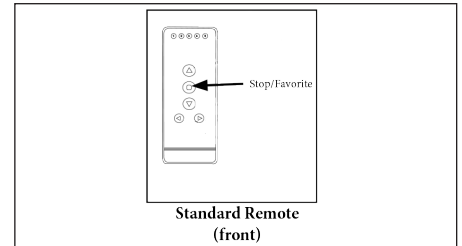
1. Using the UP and DOWN arrows, move the shade to the desired Favorite position.



**Standard Remote (front)**

**Standard Remote (back)**

2. To save the Favorite position, hold the LIMIT button and hold the UP button at the same time. Release after a series of short beeps.



**Standard Remote (front)**

3. Press the STOP/FAVORITE button to move the shade to the set Favorite position.  
**NOTE:** Make sure shade is fully stopped before using the Favorite position.

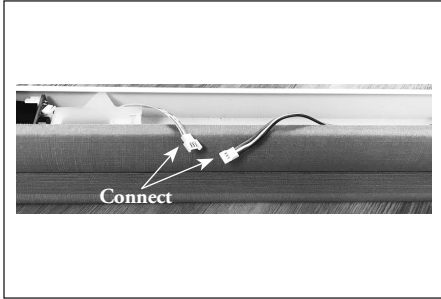


# Simplicity

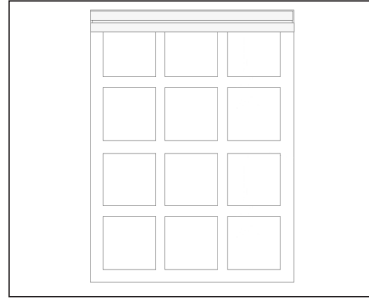
## Rechargeable Motorization

### 6 CHANNEL TIMER REMOTE | Quick Start Guide

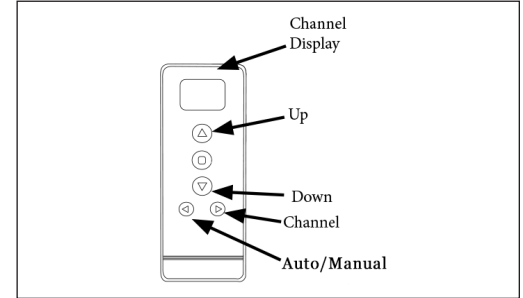
Your shade has come pre-programmed from the factory. Follow these easy steps to get started.



1. Connect the motor and battery in the headrail (as shown).



2. Mount the shade.

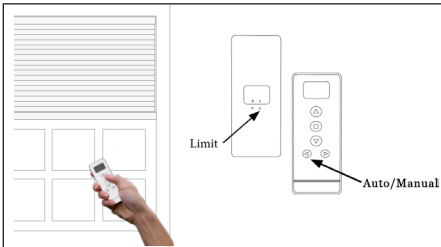


3. Your shade is now ready!

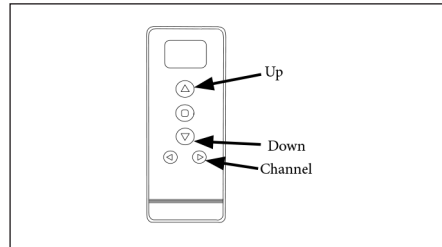
Press the AUTO/MANUAL button until the display shows 'Manual'. Select the programmed channel and use the UP and DOWN arrows to operate the shade.

## Setting Time and Day

Make sure the remote is in 'Manual' mode. Press the AUTO/MANUAL button until 'Manual' appears on the screen.

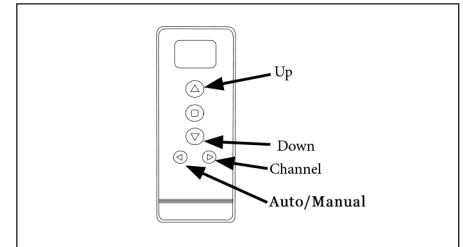


1. Push and hold the LIMIT button. While holding the limit button, push the AUTO/MANUAL button for 3 seconds and release. The hour digits will flash.



2. Use the UP and DOWN buttons to set the current hour. Press the CHANNEL button to confirm hour and advance to minutes.

**NOTE:** Time is in 24 hour format.



3. Repeat step 2 for minutes and day. Once time and day are set, hold the AUTO/MANUAL button for 3 seconds. Display will flash and then display current time and day.