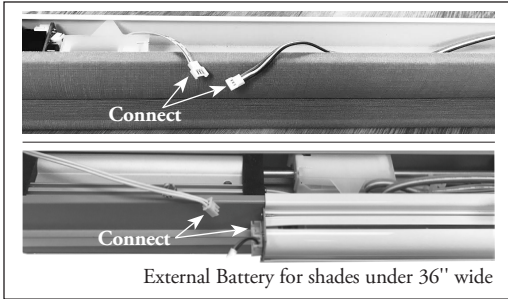




Simplicity Rechargeable Motorization

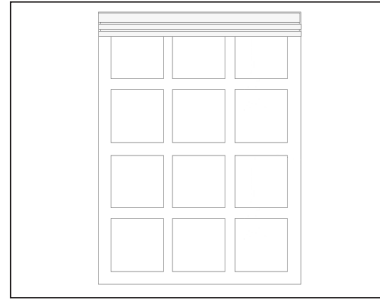
CELLULAR SHADES – TDBU | Quick Start Guide

Your shade has come pre-programmed from the factory. Follow these easy steps to get started.

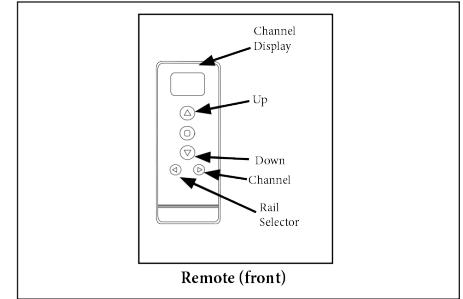


External Battery for shades under 36" wide

1. Connect the motor and battery in the headrail (as shown).



2. Mount the shade.

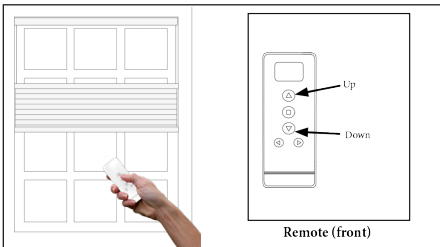


Remote (front)

3. Your shade is now ready! Select the programmed channel, then the rail, and use the UP and DOWN arrows to operate the shade.

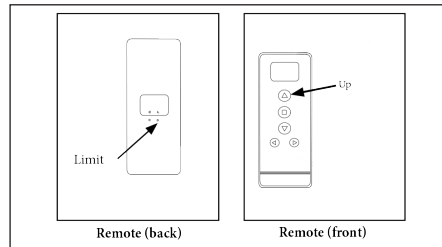
Setting/Using a Favorite Position

NOTE: Make sure there is only one shade programmed to the channel when setting a favorite position. If more than one shade is set, please see UNLINK A SHADE in the Simplicity guide at vistaproducts.com/guides.



Remote (front)

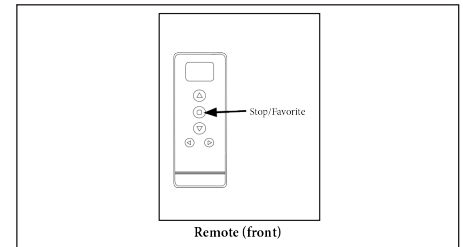
1. Using the UP and DOWN arrows, move the shade to the desired Favorite position.



Remote (back)

Remote (front)

2. To save the Favorite position; select Rail No. 3, then hold the LIMIT button and the UP button at the same time. Release after a series of short beeps.

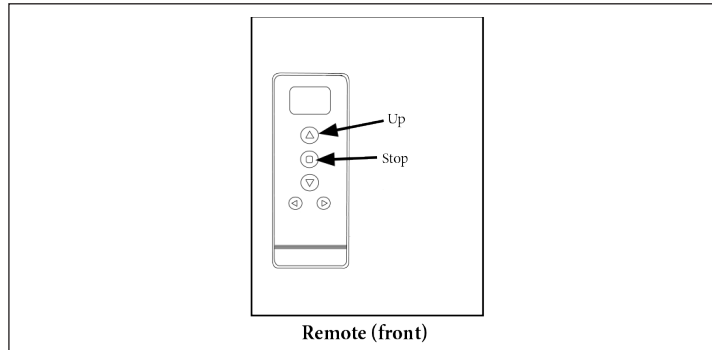


Remote (front)

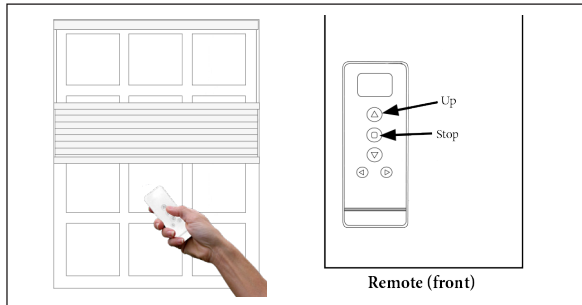
3. Press the STOP/FAVORITE button to move the shade to the set Favorite position.
NOTE: Make sure shade is fully stopped before using the Favorite position.

Removing and Adding Channels

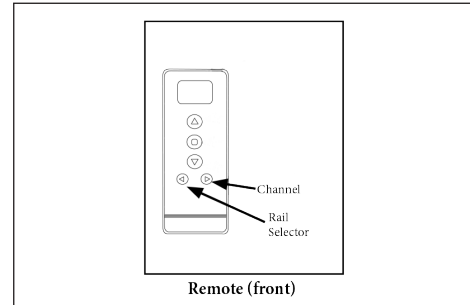
Channels can be removed from the remote if not all 14 are needed. They can also be added back to the remote once removed. Follow these steps to remove or add channels from your remote.



1. Press and hold the UP and DOWN buttons at the same time. The display will flash the current maximum number of channels. Release the buttons.



2. Once the buttons have been released, use the UP and DOWN buttons to select the amount of channels you would like on the remote.



3. Once the desired amount of channels is set, press and hold the RAIL SELECTOR and CHANNEL buttons until the display stops flashing to confirm your choice.