



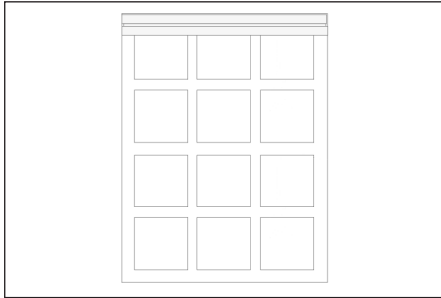
# Simplicity

## Rechargeable Motorization

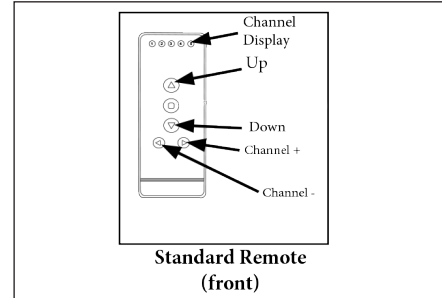
### ROLLER SHADES |

### Quick Start Guide

Your shade has come pre-programmed from the factory. Follow these easy steps to get started.



2. Mount the shade.

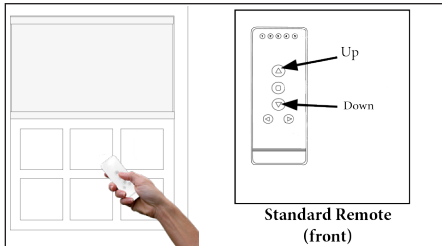


Standard Remote  
(front)

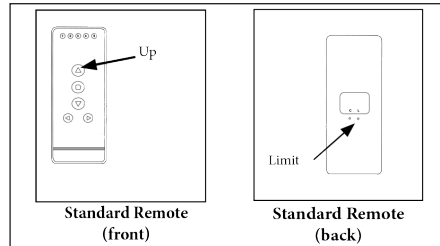
3. Your shade is now ready!  
Select the programmed channel and use the  
UP and DOWN arrows to operate the shade.

## Setting/Using a Favorite Position

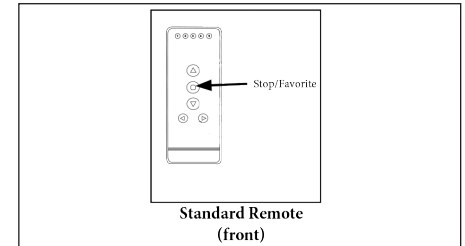
Make sure there is only one shade programmed to the channel when setting a Favorite position.  
If more than one shade is set, please see UNLINK A SHADE in the Simplicity guide at [vistaproducts.com/guides](http://vistaproducts.com/guides).



1. Using the UP and DOWN arrows,  
move the shade to the desired  
Favorite position.



2. To save the Favorite position, hold the  
LIMIT button and hold the UP button at the  
same time. Release after the shade jogs once.



3. Press the STOP/FAVORITE button to  
move the shade to the set Favorite position.  
**NOTE:** Make sure shade is fully stopped  
before using the Favorite position.

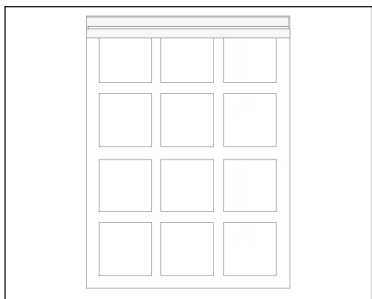


# Simplicity

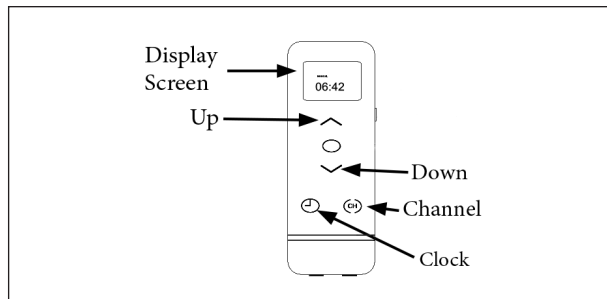
## Rechargeable Motorization

### 6 CHANNEL TIMER REMOTE | Quick Start Guide

Your shade has come pre-programmed from the factory. Follow these easy steps to get started.



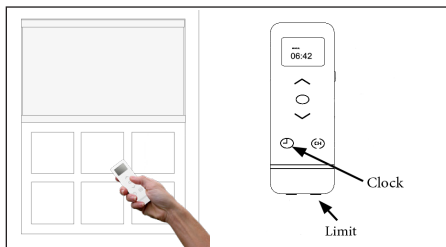
1. Mount the shade.



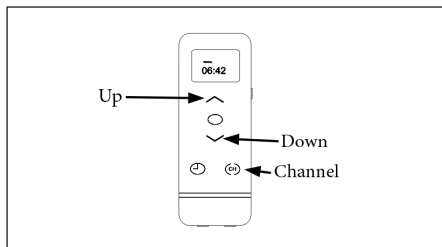
2. Your shade is now ready! Press the CLOCK button until the display shows 'Manual'. Select the programmed channel and use the UP and DOWN arrows to operate the shade.

## Setting Time and Day

**NOTE:** To turn the remote on, press the POWER button on the right side of the remote. Make sure the remote is in 'Manual' mode. Press the CLOCK button until 'Manual' appears on the screen.

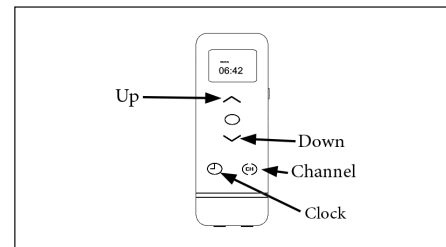


1. Push and hold the LIMIT button. While holding the limit button, push the CLOCK button for 3 seconds and release. The hour digits will flash.



2. Use the UP and DOWN buttons to set the current hour. Press the CHANNEL button to confirm hour and advance to minutes.

**NOTE:** Time is in 24 hour format.



3. Repeat step 2 for minutes and day. Once time and day are set, hold the CLOCK button for 3 seconds. Display will flash and then display current time and day.