

P1 BUTTON FUNCTIONS

Press P1

NOTE: The motor will not respond to the remote if it is in “Sleep Mode”. Hold the P1 button until shade jogs.

If motor is in “Sleep Mode” & limits are set:

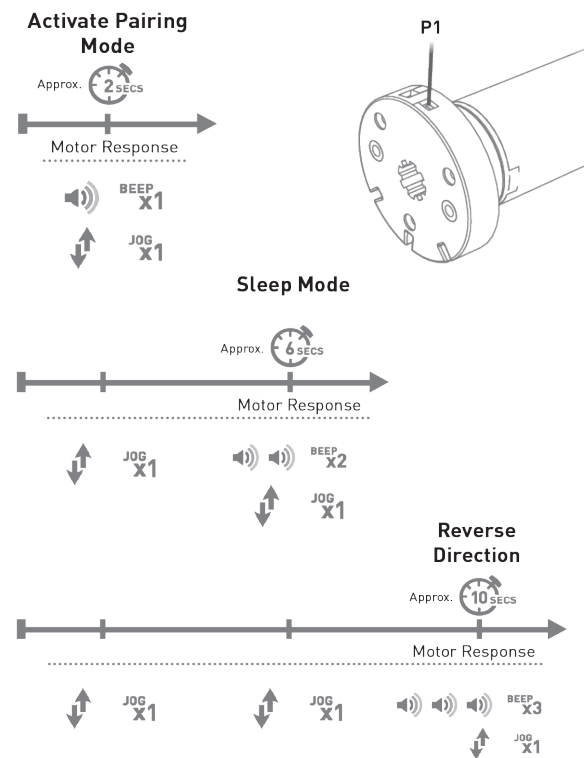
- Function achieved: Wake and control
- Visual feedback: Motor wakes and runs in a direction.
- No audible feedback
- Function: Motor is restored from Sleep Mode and RF control is active.

If limit is NOT set:

- No function achieved
- No visual feedback
- No audible feedback
- No function

If limits are set:

- Function achieved: Operational control of motor, run to limit. Stop if running.
- Visual feedback: Motor runs
- No audible feedback
- Function: Operational control of motor after pairing and limit setting is complete first time.



ADJUSTING LIMITS

ADJUSTING UPPER LIMIT

Upper or Lower limits can be adjusted if multiple shades are programmed to a single channel.

NOTE: When adjusting one shade, the other shades on that channel need to be temporarily unlinked from the remote. Follow the limit setting instructions and then relink “turned off” shades. See ADDING OR REMOVING CONTROLLERS AND CHANNELS.

RUN SHADE TO PRESET UPPER LIMIT.

Hold UP and STOP on controller.



Move shade to the desired highest position by pressing the UP button.



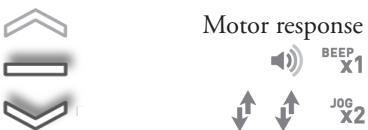
To save upper limit, hold UP and STOP.



ADJUSTING LOWER LIMIT

RUN SHADE TO PRESET LOWER LIMIT.

Hold DOWN and STOP on controller.



Move shade to the desired lowest position by pressing the DOWN button.



To save lower limit, hold DOWN and STOP.



TROUBLESHOOTING

MOTOR IS NOT RESPONDING.

CAUSE: Battery in motor is depleted.

REMEDY: Recharge with compatible AC adapter and check connection and positioning of PV panel.

CAUSE: Insufficient charging from Solar [PV] Panel.

REMEDY: Check connection and orientation of PV panel.

CAUSE: Remote battery is discharged.

REMEDY: Replace battery.

CAUSE: Battery is inserted incorrectly into remote.

REMEDY: Check battery polarity.

CAUSE: Radio interference/shielding.

REMEDY: Ensure remote is positioned away from metal objects and the aerial on motor or receiver is kept straight and away from metal.

CAUSE: Receiver distance is too far from remote.

REMEDY: Move remote to a closer position.

CAUSE: Power Failure.

REMEDY: Check power supply to motor is connected and active.

MOTOR BEEPS 10 TIMES WHEN IN USE.

CAUSE: Battery voltage is low/PV [solar] panel issue

REMEDY: Recharge with compatible AC adapter or check connection and positioning of PV panel.

CANNOT PROGRAM A SINGLE MOTOR [MULTIPLE MOTORS RESPOND]

CAUSE: Multiple motors are paired to the same channel.

REMEDY:

1. Always reserve an individual channel for programming functions.
2. System Best Practice – provide an extra 15 channel remote in your multi motor projects, that provides individual control for each motor for programming purposes.
3. Place all your motors into sleep mode.



AUTOMATE™

Li-ion ARC TUBULAR MOTOR

PROGRAMMING & OPERATING INSTRUCTIONS

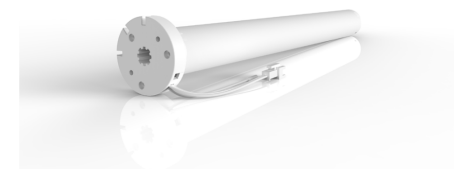
FEATURES

AUTOMATE | Li-ion ARC motors offer a wire free rechargeable easy to use and program solution to suit a large range of applications, torques and speeds.

The Leveling Control feature allows for precise positioning of multiple shades ensuring perfect alignment. Additionally, a favorite position can be pre-set and recalled at any time.

Note: It is recommended to “lock” settings once set.

- Electronic Limits
- 433 MHz Bi-Directional RF Communication
- Leveling Control
- 3 x Selectable Rpm
- Favorite Position
- Roller & Tilt Modes
- Solar Powered



QUESTIONS?

Call Vista’s hotline for quick assistance.

800-726-3380

SAFETY INSTRUCTIONS

WARNING: Important safety instructions to be read before installation.

- Incorrect installation can lead to serious injury and will void manufacturer's liability and warranty.

- It is important for the safety of persons to follow the enclosed instructions. Save these instructions for future reference.

CAUTION

- Do not allow children to play with this device.
- Use or modification outside to scope of this instruction manual will void warranty.
- Installation and programming to be performed by a suitably qualified installer.
- Keep antenna straight and clear from metal objects.
- Do not cut the antenna.
- Before installation, remove any unnecessary cord and disable any equipment not needed for powered operation.
- Do not expose the motor to water or install in humid or damp environment.
- Motor is to be installed in horizontal application only.
- The routing of cable through walls shall be protected by isolating brushes or grommets.
- Ensure power cable and aerial is clear and protected from moving parts.
- If cable or power connector is damaged do not use.

REPLACING THE REMOTE BATTERY

Remove the battery tray from the remote by inserting your fingernail into the indentation on the back of the remote.

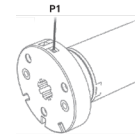
Face the remote up to avoid the battery falling out. Insert the new battery (CR2430 lithium) into the battery tray with the writing facing up, when the remote is facing up.

Slide the tray back into the remote.

PAIRING OR REMOVING CONTROLLERS AND CHANNELS

USING MOTOR P1 BUTTON

Hold P1 button on motor head. Then, within 4 sec, hold STOP on controller to add or remove.



Motor response:



USING A PRE-EXISTING CONTROLLER

A=Existing controller or channel [to keep].

B=Controller or channel to add or remove.

Press P2 on existing controller.



Motor response:



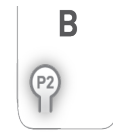
Press P2 on existing controller.



Motor response:



Press P2 on new controller.



Motor response:



FAVORITE POSITIONING

SET A FAVORITE POSITION

Move shade to the desired position by pressing the UP and DOWN button on the controller.



Press P2 on controller.



Motor response:



Press STOP on controller.



Press STOP on controller.



SEND SHADE TO FAVORITE POSITION

Hold STOP on controller.



DELETE FAVORITE POSITION

SET SHADE TO FAVORITE POSITION.

Press P2 on controller.



Motor response:



Press STOP on controller.



Press STOP on controller.



ENTER ROLLER MODE [DEFAULT]

Hold UP and DOWN on controller.



Motor response:



Press STOP



ADJUSTING MOTOR SPEED - DC MOTOR ONLY

NOTE: Slower motor speed is quieter and recommended with timer.

INCREASE OR DECREASE MOTOR SPEED

Press P2 on controller.



Motor response:



TO INCREASE SPEED

Press Up



TO DECREASE SPEED

Press Down



Motor response:



Motor response:



If motor does not react to speed adjustment, the maximum or minimum speed has already been reached.

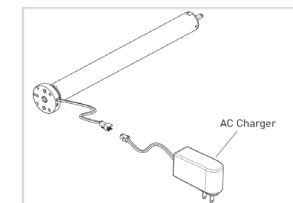
MOTOR CHARGING

CHARGING OPTIONS

This motor has a 12V built in Li-ion battery pack with integrated charge management.

Max power input for recharging: 12.6V/1000mAh

- Fully charged at shipping.
- During operation, if voltage drops to less than 10V, the motor will beep 10 times to prompt it needs to be charged.
- Motor will stop running when the voltage is lower than 7V and it will resume again when the voltage is greater than 7.5V.



Ensure cable is kept clear of fabric
Ensure antenna is kept straight and away from metal objects.