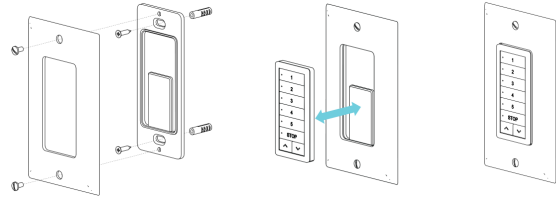


MAGNETIC WALL CLIP

Use the Magnetic Wall Clip if you require the remote to be easily detachable.

BEST PRACTICE TIP:

Program the switch to the motor prior to installation, the test radio performance in the location the switch will be installed in, to ensure best performance.



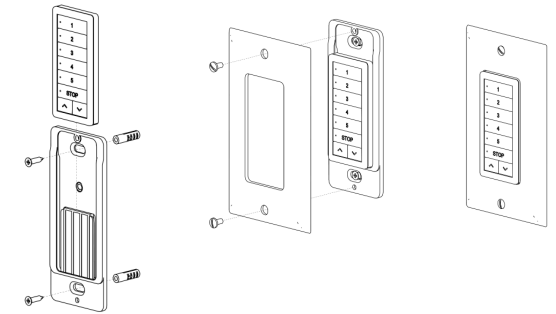
- Use supplied fasteners and anchors as needed to attach the base and cover.
- Switch is held in position magnetically and can be removed as desired.
- Safely dispose of the unused Fixed Wall Clip.

FIXED WALL CLIP

Use the Fixed Wall Clip if you require the remote to be non-removable.

Best Practice Tip:

Program the switch to the motor prior to installation, the test radio performance in the location the switch will be installed in, to ensure best performance.



- Slide the Switch onto the Wall Clip.
- Use supplied fasteners and anchors as needed to attach the base and cover.
- Switch is secured unless the cover is removed.
- Safely dispose of the unused Magnetic Wall Clip

SELECTING A CHANNEL

Press desired channel button(s).

Blue LEDs will illuminate indicating channel selection.



To deselect channel, press channel button until LED turns off.



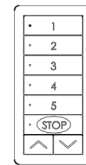
IMPORTANT

Switch requires that at least one channel be selected at all times. First select an additional channel, then deselect channel don't want to operate.

LOCKING THE LIMIT SETTING FUNCTION

Stops unwanted changes to limit settings

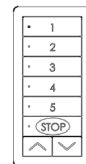
Press STOP and hold for 15 seconds.



All lights flash x 1

Release STOP button. Locked limit settings

Press STOP and hold for 15 seconds.



All lights flash x 2

Release STOP button. Unlocked limit settings



IMPORTANT

The locked setting will prevent to any multi-functions. These include reversing direction before setting limits, limit setting and toggling between tilt and roller modes.

TROUBLESHOOTING

MOTOR IS NOT RESPONDING.

CAUSE: Switch battery is discharged.

REMEDY: Replace battery.

CAUSE: Radio interference / Shielding.

REMEDY: Ensure remote is positioned away from metal objects and that aerial on motor or receiver is kept straight and away from metal.

CAUSE: Receiver distance is too far from remote.

REMEDY: Move remote to a closer position or consider a repeater for improved performance.

CAUSE: Power failure.

REMEDY: Check power supply to motor is connected and active.

CANNOT SET LIMITS ON A SINGLE MOTOR [MULTIPLE MOTORS RESPOND.]

CAUSE: Using channel 0 to adjust motor limits.

REMEDY:

1. Always reserve an individual channel for programming functions.
2. SYSTEM BEST PRACTICE – Provide an extra 15 channel remote in your multi motor projects, that provides individual control for each motor for programming purposes.

MOTOR WILL NOT GO DOWN AFTER SETTING THE TOP LIMIT.

CAUSE: Top limit was set using the DOWN and STOP buttons.

REMEDY: Reset the motor and begin programming sequence again.

Remember that upper limit is to be set using the UP and STOP buttons, and the down limit is set using the DOWN and STOP buttons.

MOTOR WILL PAIR, BUT CAN NOT SET LIMITS

CAUSE: Switch is in a locked state. Control must be unlocked to set limits or perform any multi-button functions.

REMEDY: Press and hold STOP button for 15 seconds, until locked state changes.

AUTOMATE™

Paradigm Flush Wall Switch

PROGRAMMING & OPERATING INSTRUCTIONS

FEATURES

AUTOMATE | Paradigm flush wall switches features a contemporary design and a wire free deployment, making them retrofit ready for any location. Paradigm 5 channel switches are perfect for individual shade, room and whole home control.

The Paradigm flush mount switch can be mounted on top of any surface. Its slim profile eliminates the need for any holes to be cut in walls.

- Multi channel selectable
- Retrofit Ready
- Group Control
- Compatible with screwless decorator cover plates
- Optionally functions as handheld remote



QUESTIONS?

Call Vista's hotline for quick assistance.

800-726-3380

SAFETY INSTRUCTIONS

WARNING: Important safety instructions to be read before installation.

Incorrect installation can lead to serious injury and will void manufacturer's liability and warranty.

It is important for the safety of persons to follow the enclosed instructions. Save these instructions for future reference.

CAUTION

- Do not expose to water, moisture, humid and damp environments or extreme temperatures.
- Do not allow children to play with this device.
- Use or modification outside the scope of this instruction manual will void warranty.
- Installation and programming to be performed by a suitably qualified installer.
- Frequently inspect for improper operation. Do not use if repair or adjustment is necessary.
- Keep clear when in operation.
- Replace battery with correctly specified type.

ADJUSTING LIMITS

ADJUSTING UPPER LIMIT

RUN SHADE TO PRESET UPPER LIMIT.

Hold UP and STOP on controller.



Motor response:



Move shade to the desired highest position by pressing the UP button.



To save upper limit, hold UP and STOP.



ADJUSTING LOWER LIMIT

RUN SHADE TO PRESET LOWER LIMIT.

Hold DOWN and STOP on controller.



Motor response:



Move shade to the desired lowest position by pressing the DOWN button.



To save lower limit, hold DOWN and STOP.



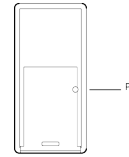
FAVORITE POSITION

SET A FAVORITE POSITION

Move shade to the desired position by pressing the UP or DOWN button on the controller.



Press P2 on controller.



Motor response:



Press STOP on controller.



Press STOP on controller.



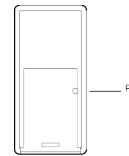
SEND SHADE TO FAVORITE POSITION



DELETE FAVORITE POSITION

SET SHADE TO FAVORITE POSITION.

Press P2 on controller.



Motor response:



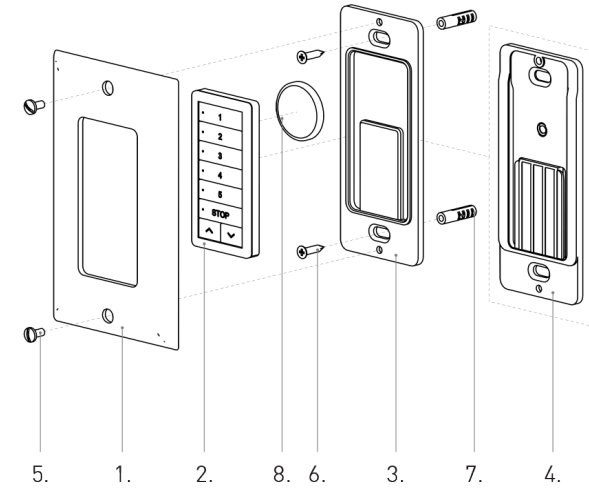
Press STOP on controller.



Press STOP on controller.



KIT COMPONENTS



1. 1 x Cover
2. 1 x Switch Remote
3. 1 x Magnetic Wall Clip
4. 1 x Fixed Wall Clip
5. 2 x Pan Head Screw
6. 2 x Phillips Head Screw
7. 2 x Wall Plug
8. 3V - CR2430 Battery
9. Programming Manual

INSTALLATION SWITCH BATTERIES

Open rear battery cover by gently separating switch covers with a screwdriver.



Install CR2430 battery with positive side facing up. Snap covers back together.

