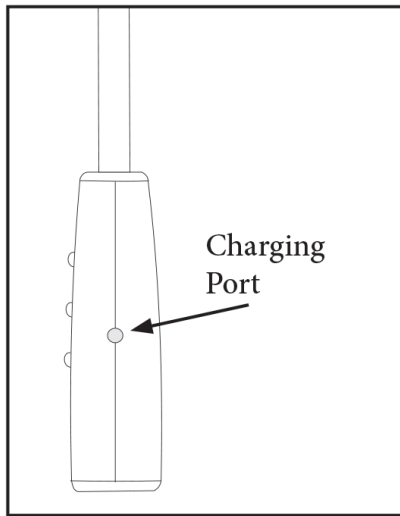


POWERWAND™ MOTORIZED SHADES

RECHARGEABLE BATTERY

The rechargeable batteries are contained inside the motor (within the headrail) and cannot be changed. They will need to be re-charged periodically. The motors will arrive with about a 50%-60% charge from the factory. When the shade begins to operate slowly, or only beeps when you attempt to operate the shade, it is time to charge the battery.

Plug the 8.4 volt charger into the port on the side of the control wand.



Plug the charger into a wall outlet.

A red light on the charger indicates that the battery is charging.

To fully charge the batteries, allow the batteries to charge for a least 1 hour after the light on the charger turns green.

A typical charge will take between 4 – 6 hours.

MOTOR DIRECTION CHANGE

When/if it becomes necessary to reprogram a shade you may experience that the down button causes the shade to move up, and the up button moves the shade down.

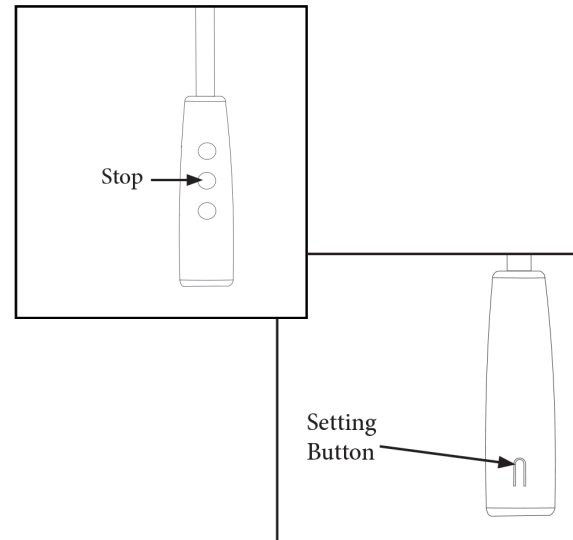
This “reversing” will happen if the motor and wand are located on the left side of the shade.

The direction of the motors rotation needs to be changed so the shade rolls in the direction of the buttons.

Press and hold the SETTING button, then also press and hold the STOP button.

Hold them both until the motor beeps. Check the rotation to assure it is correct.

Then follow programming instructions.

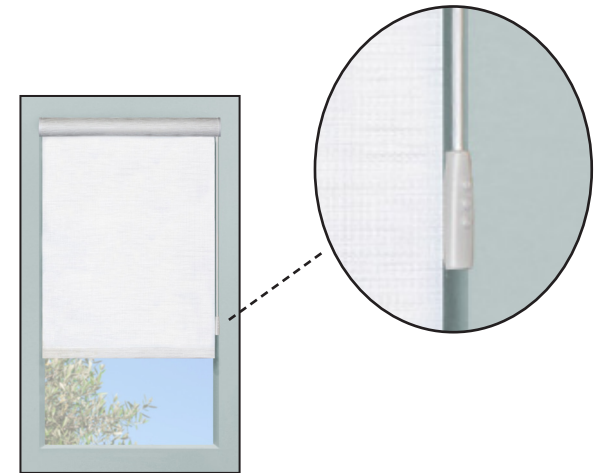


POWER WAND™

PROGRAMMING & OPERATING INSTRUCTIONS

OPERATION

For operation, press the UP or DOWN button on the wand and release. The shade will travel to its' programmed upper or lower limit. Using the center STOP button will allow you to stop the shade at any point during its' travel. *If the upper or lower limits are not set at the desired position, see Adjust Motor limits section.*



QUESTIONS?

Call Vista's hotline for quick assistance.

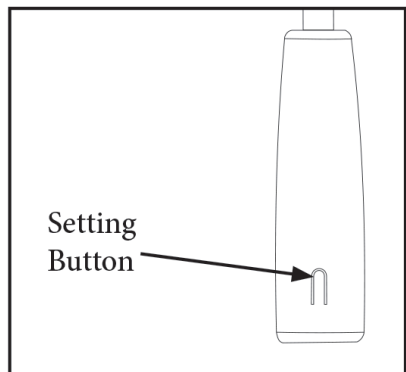
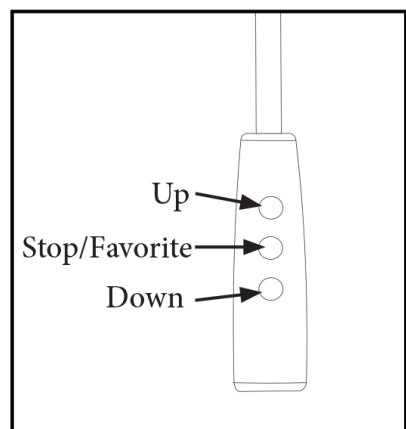
800-726-3380

POWERWAND™ SHADE PROGRAMMING

ADJUST MOTOR LIMITS

To program the shade you will need to have a sufficient charge on the internal battery. The wand will be used to move the shade and set the limits.

The wand has an UP, STOP/FAVORITE, DOWN buttons on the wand face. On the back of the wand is the SETTING button, it looks like the tongue of a shoe. On the side of the wand is the charging port.



POWERWAND™ SHADE PROGRAMMING

To program the shade, press and hold the SETTING button on the wand until the motor makes a series of beeps. This will take between 5 and 10 seconds. Once the beeps are achieved, move the shade to either its' upper or lower position by pressing and releasing the UP or DOWN button.

The shade will move on its own, but you must stop it BEFORE it reaches the top or bottom of the shade by depressing the STOP button only. Now press the UP or DOWN button and the shade will move in very short bursts. Move the shade until it is at the desired stopping point.

Press the SETTING button on the back of the wand and get a single beep. The single beep indicates that the limit has been set.

Next, press the UP or DOWN button to move the shade to the opposite limit. Once the shade starts to move release the button, but again, press the STOP button before the shade reaches the limit. Again, by pressing the UP or DOWN button the shade will move in short bursts until the desired stopping point is reached.

Press the SETTING button on the back of the wand and get a single beep.

The shade is now programmed!

SETTING A MID OR FAVORITE POSITION

Your shade has the ability to stop at mid-point between the upper and lower limit. To set a midpoint or favorite position move the shade and stop it at the position you would like to set. Once in position press and hold the SETTING button on the back of the wand AND then press and hold the UP button at the same time. Hold both together until the motor beeps, then release.

With the shade at either the upper or lower limit, simply press the STOP/FAVORITE button and the shade will move to the pre-set position.

To establish a new favorite position simply move the shade to the new desired position. Press and hold the SETTING button, and then press and hold the UP button, holding both together until the motor beeps. Your new Favorite limit has been set.

To eliminate a Mid or Favorite position the shade must be completely reprogrammed and new upper and lower limits set. Refer to Power Wand Shade Programming section.

